



Republic of the Philippines  
Department of Finance  
**INSURANCE COMMISSION**  
1071 United Nations Avenue  
Manila



**BIDS AND AWARDS COMMITTEE  
SUPPLEMENTAL BID BULLETIN NO. 2**

**SUPPLY, DELIVERY, INSTALLATION AND COMMISSIONING OF LINK LOAD  
BALANCER FOR THE INSURANCE COMMISSION  
(Reference No. 16-06-179)**

This Supplemental Bid Bulletin No. 2 dated 01 July 2016 is being issued to clarify, modify, or amend items in the Bidding Documents.

The following Items in the Bidding Documents for the **Supply, Delivery, Installation and Commissioning Link Load Balancer for the Insurance Commission** dated 22 June 2016 are hereby revised/amended:

1. **Question :**

"How many Client Access Server Role (CAS) and Front End Transport Server is IC have?"

**Answer :**


In the Exchange 2013 CAS role consists of Client Access Front End role (CAFE) and the Front-End Transport (FET) which is hosted in a one (1) server and one (1) server for the Mailbox Server. The Insurance Commission (IC) considers a High-Availability (HA) Exchange server, therefore the total number of servers for CAFE/FET and Mailbox are four (4) servers.

2. As part of the Technical Specification, attached are the Network Diagrams of the Insurance Commission as Annex "A" and Annex "B".

This Supplemental Bid Bulletin No. 2 shall form part of the Bid Documents. Any provisions in the Bid Documents inconsistent herewith is hereby amended, modified and superseded accordingly.

For the information and guidance of all concerned.

Issued this **01 July 2016** in the City of Manila.

  
**BENEDICTO N. SANTOS**  
Vice Chairman  
Bids and Awards Committee

Supplemental Bid Bulletin No. 2 for the **Supply, Delivery, Installation and Commissioning Link Load Balancer for the Insurance Commission (Project Reference No. 16-06-179)** dated 01 July 2016 consisting of four (4) pages.

Received by:

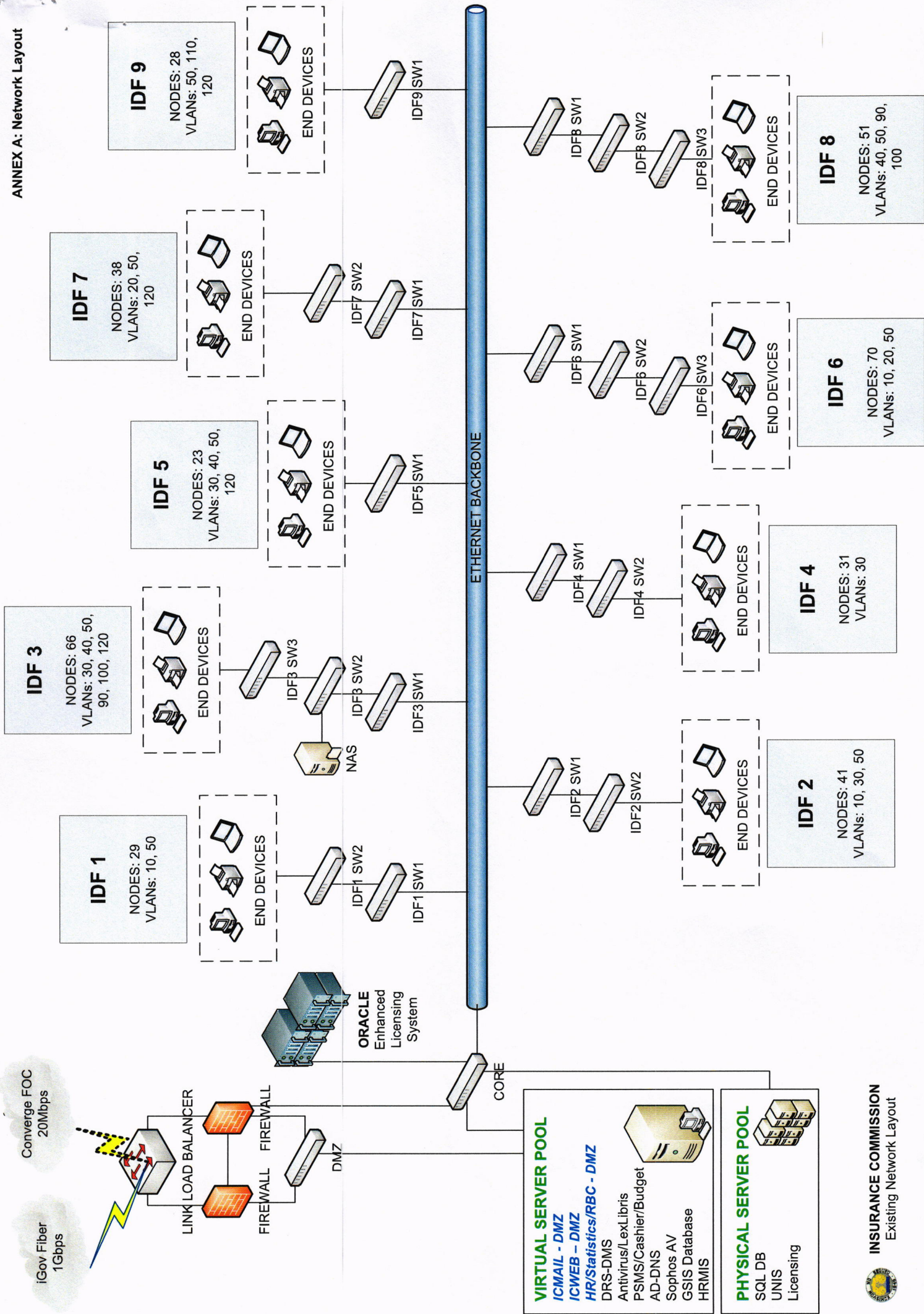
Name of the Bidder/Company: \_\_\_\_\_

Name of Authorized Representative/s: \_\_\_\_\_

Signature/s: \_\_\_\_\_

Date: \_\_\_\_\_





## ANNEX B: Network Layout

